

## Marathon Endurance 6200

### Uptime

- 99.999% uptime with no failover
- Protection from component failures and transient OS faults
- More than RAID; better than a cluster
- Highest levels of availability for your most critical applications

### Choice

- Leading Intel®-based server brands
- Off-the-shelf Microsoft® Windows® server operating systems
- Shrink-wrapped applications – no modifications necessary

### Value

- Low cost of ownership due to use of standard servers
- Easy deployment
- Common management tools
- Simple administration

## Go the Distance with Marathon

What happens to your business if your servers go down? Don't want to even think about the answer? With Marathon Endurance® solution this is a question you never need to ask.

Marathon Endurance protects your Intel/Windows-based servers from downtime due to component failures, hot swaps, and transient operating system faults. It provides the highest levels of fault and disaster tolerance so your business can continue to work at peak productivity, generate revenue, save money, and satisfy your customers.

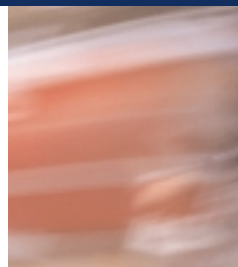
With Marathon you get 99.999% uptime without the cost and limitations of a proprietary solution or the hassles and failover problems of a cluster.



### The Endurance Product

It's Marathon's patented technology that makes the difference

- Choice – available on leading server brands
- ComputeThru® processing – no failure event will stop a transaction in progress
- Load 'n Go™, No Touch Recovery™ – any replaced component will automatically rejoin
- Continuous data access – data is available even through failures of OS or hardware
- Uninterrupted connectivity – duplicate network connections
- OS fault resilience – patented architecture provides extra level of OS fault resilience for off-the-shelf Windows OS
- No need for scripting or cluster API programming
- Disaster tolerance – optional SplitSite capability allows physical separation of redundant systems



**What is Endurance?**

The Endurance product consists of hardware and software that work together to integrate an array of four industry-standard servers into a single, logical Marathon Assured Availability™-based solution. You choose the hardware – from Compaq, Dell, HP, or IBM – and Marathon, together with its partners, integrates the software and interface cards to deliver a nonstop, continuous data access, fault-tolerant solution.

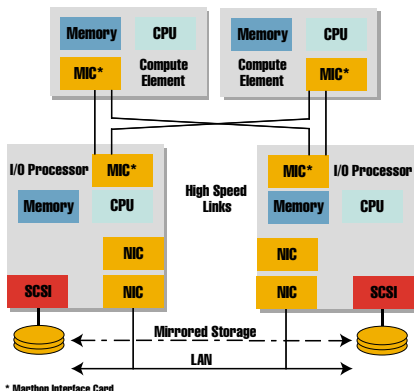
Each Intel-based server that makes up an Endurance solution includes a Marathon Interface Card (MIC), which acts as the physical layer for communication. These systems are connect-

ed by fiber-optic cable. The four systems are divided into pairs; each pair includes a Compute Element (CE) and an I/O Processor (IOP). The Windows operating system and applications run only on the CEs. The IOPs do all the I/O processing.

**How does it work?**

Because the Endurance solution separates the operating system and applications in the CE from the I/O processing in the IOP, it improves overall system reliability by eliminating the most common cause of operating system conflicts. It also eliminates the need for a RAID controller, because the solution provides disk-mirroring that equals RAID 1 functionality.

Marathon’s Endurance product keeps your applications running nonstop by detecting, isolating, and computing through failures with ComputeThru® technology. Unlike a cluster, which requires 10 minutes or more of downtime while it performs a failover, the Endurance system continues processing with no interruption in service, no loss of application state, and no operator intervention. If a failure occurs, your users never know it. With the Marathon No Touch Recovery® feature, the system automatically assimilates new components without operator intervention. When powered on, it resynchronizes, still totally transparent to your users.



**Endurance Array**

*For more information*

Please contact your authorized Marathon Business Partner or Marathon directly:

Marathon Technologies Corporation  
1300 Massachusetts Avenue  
Boxborough, MA 01719 U.S.A.

Toll Free: 1.800.884.6425

Phone: 978.266.9999

Fax: 978.266.0023

Email: info@marthontechologies.com

www.marthontechologies.com

**Marathon Endurance 6200 Technical Specifications**

Endurance Software	
Operating system support	Windows 2000, Windows NT 4.0, Terminal Server
Storage support	SCSI and Fibre channel
Networking support	Fast and Gigabit Ethernet
Redirected video support	Color palette: 256 colors
	Resolutions: 640 x 480, 800 x 600, 1024 x 768
Endurance Manager remote client support	Windows 2000, Windows NT 4.0, Terminal Server, Windows 95, Windows 98, Workstation
Marathon Interface Card (MIC)	
Expansion bus architecture	32-bit PCI with MIC extended BIOS
Equipment requirements	One full-length PCI slot
Dimensions	PCI long card
I/O address	Automatically assigned by system BIOS
Interrupt	Automatically assigned by system BIOS
Certifications	FCC part 15, EN5502, CE Mark, VCCI
MIC Cable	
Cable type	Multi-mode fiber, 50/125 micron
	Single-mode fiber, 9/125 micron
Connector type	MT-RJ
Local cable length	5 meters
Cross-tuple cable length	10 meters
Standard split site cable length	Up to 500 meters (cable not supplied)
	Up to 10,000 meters (cable not supplied)
IOP Link Cross-Over Cables	
Fast Ethernet cable type/length	Category 5 UTP/8 meters
GB Ethernet cable	Multi-mode fiber, 62.5-125 micron/8 meters/ SC duplex type/length/connector type

**Marathon: No faults. No halts. No kidding.**



The Marathon logo, Assured Availability, Endurance, ComputeThru and No Touch Recovery are registered trademarks of Marathon Technologies Corporation. Microsoft and Windows are registered trademarks of Microsoft Corporation. All other trademarks and registered trademarks are the property of their respective owners. Copyright 2001 Marathon Technologies Corporation. All rights reserved. DS620061401